

THE BEST OF WHAT'S NEXT

New products that make us sing, and the ultimate garden tour round-up

Written and Produced by MOLLY JANE QUINN

▶ **TACTILE FINDS** • Three local designers debut carpet and fabric collections, plus a nationally renowned furniture line comes to Boston.

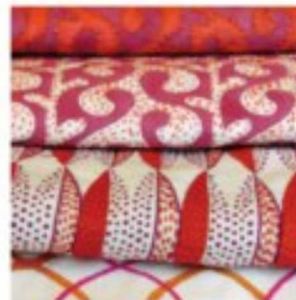
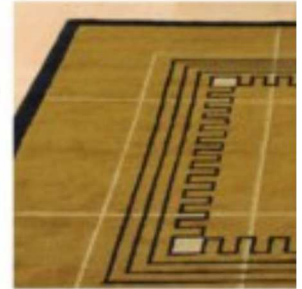


◀ **MALLY SKOK** South African-born Skok new line of fabrics (hand-printed by Peter Fasano) is meant for layering. All of the colors are complementary and feature various shapes for building momentum, such as using a stripe on the back of a chair and a pattern on the seat. The designs, available Studio 534 at the Boston Design Center, are fun, flirty, and hopeful. 📍 1 Design Center Place; 617-345-9900, mallyskokdesign.com



▲ **DAVID WEBSTER** The man behind mega-showroom Webster & Company is bringing Holly Hunt's streamlined furniture and fabrics to the Boston Design Center. Webster is a fan of Hunt's simple shapes, like this sofa from the diffusion line Studio H. We love Christian Liaigre's designs for Hunt, as well. 📍 1 Design Center Place; 617-261-9660, hollyhunt.com.

▶ **KATHLEEN POWERS** The namesake owner of K. Powers & Company has designed a new line of Art Deco-inspired rugs. Although she has created one-offs for clients, "Style Moderne" is her first comprehensive collection. This geometric pattern is just one of four initial styles, with more to be added to the line throughout the year. 📍 16 Charles St., Needham, Massachusetts; 781-455-0505, kpowers.com.



◀ **SEEMA KRISH** The Boston-based fabric designer taps her Indian heritage for "Bombay Bliss," a to-the-trade collection. Woven linen, hand-spun cotton khadi, voile, and silk are all printed, embroidered and embellished by hand and then are layered for a riotous collection that piles on color and pattern, and that Krish says is as environmentally friendly as possible. 📍 46 Waltham St., No. 305B; 617-451-02 seemakrish.com.

🌸 Horticulturists unite! The season's top garden tours offer a glimpse at private spaces — with a charitable twist.

5•21
HIDDEN GARDENS OF BEACON HILL
LOCATION
Boston
TICKETS
\$30 advance
\$35 tour day
BENEFITS
Beacon Hill Garden Club
CONTACT
617-227-4392,
beaconhillgardenclub.org

6•19-21
THE SECRET GARDEN TOUR
LOCATION
Newport, Rhode Island
TICKETS
\$20 advance
\$25 tour day
BENEFITS
Aquidneck Island Public Schools' arts education
CONTACT
401-847-0514,
secretgardentours.org

6•19-20
POCKET GARDEN TOUR OF PORTSMOUTH
LOCATION
Portsmouth, New Hampshire
TICKETS
\$17 advance
\$20 tour day
BENEFITS
Unitarian-Universalist South Church programs
CONTACT
603-436-4762,
southchurch-uu.org

6•20
SOUTH END GARDEN TOUR
LOCATION
Boston
TICKETS
\$17 advance
\$20 tour day
BENEFITS
South End/Lower Roxbury Open Space Land Trust
CONTACT
617-347-0999,
southendgardentour.org

7•12
SECRET GARDEN TOUR
LOCATION
Provincetown, Massachusetts
TICKETS
\$30
BENEFITS
Provincetown Art Museum educational program
CONTACT
508-487-1750,
paam.org